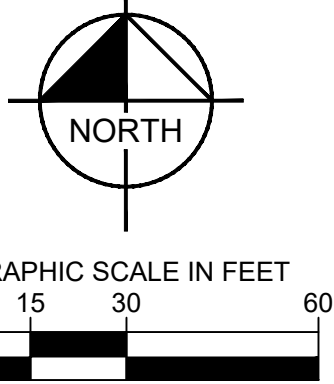
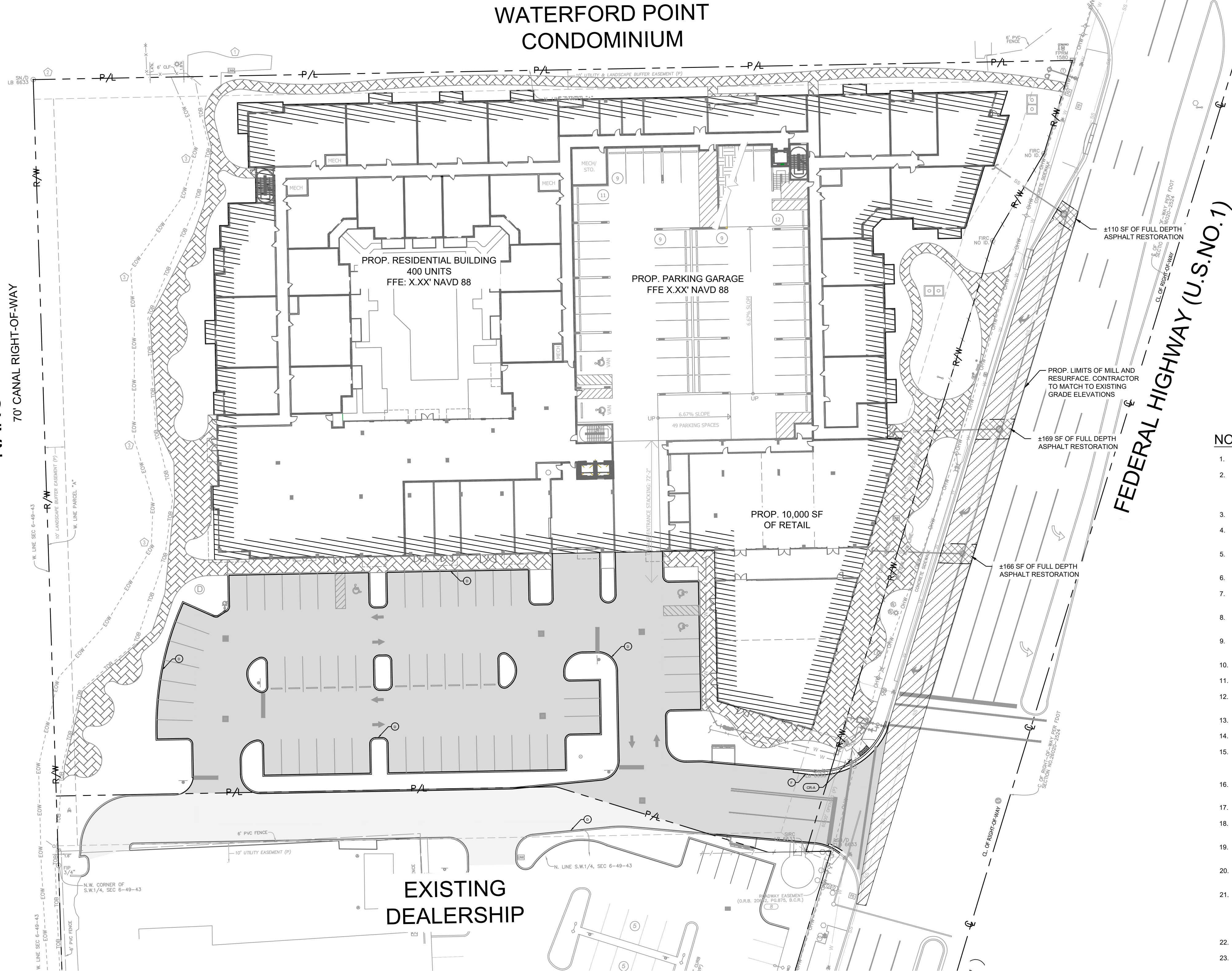


Plotted By:Abilad, Emmanuel Sheet:Mill Creek POMPANO Layout:C-300 PAVING AND GRADING PLAN September 09, 2025 08:36:53pm K:\FTL_Civil\043 jobs\043175014 Mill Creek POMPANO Design\CADD\PlanSheets\C-GRAD.dwg
This document, together with the concepts and designs presented herein, as an instrument of service, is intended only for the specific purpose and client for which it was prepared. Reuse of and improper reliance on this document without written authorization and adaptation by Kintley-Horn and Associates, Inc. shall be without liability to Kintley-Horn and Associates, Inc.

PAVING AND GRADING KEY

- D = TYPE 'D' CURB
- VG = VALLEY GUTTER CURB
- F = TYPE 'F' CURB & GUTTER
- T = CURB TRANSITION
- CR = FDOT TYPE CURB RAMP

NANCY WATERWAY
70' CANAL RIGHT-OF-WAY



KHA PROJECT 043175014		DATE 9/4/2025		SCALE AS SHOWN	DESIGNED BY GVF	DRAWN BY EA	CHECKED BY GVF	DATE
MODERA POMPANO BEACH		PAVING AND GRADING PLAN		PREPARED FOR MCRT INVESTMENTS LLC		FLORIDA		
SHEET NUMBER C-300		PZ25-12000028		10/15/2025		DRC		
Kimley»Horn		© 2025 KIMLEY-HORN AND ASSOCIATES, INC. 8201 PETERS ROAD, SUITE 2200, PLANTATION, FL 33324 PHONE: 954-535-5100 FAX: 954-739-2247 WWW.KIMLEY-HORN.COM		REGISTRY NO. 35106		REVISIONS		BY DATE